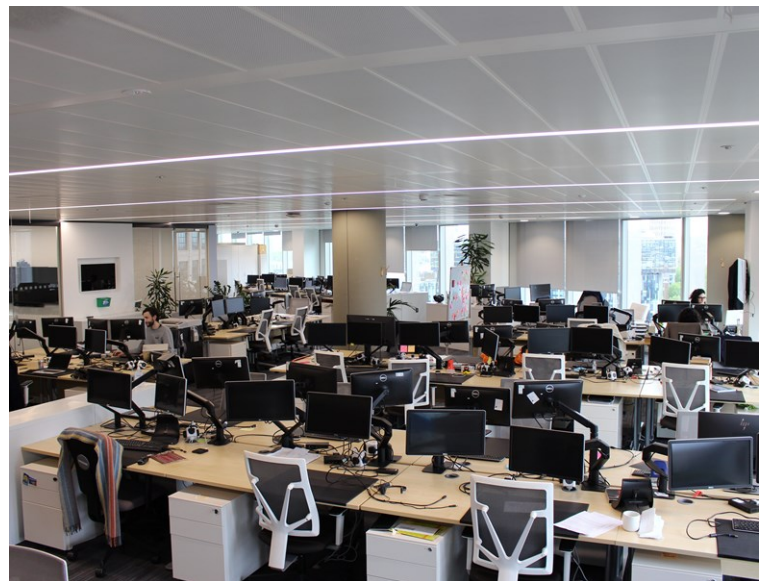


PT 11TH FLOOR, 240 BLACKFRIARS ROAD, SE1, LONDON SE1 8BU

OFFICE TO RENT | 5,405 SQ FT | £65.00 PER SQ FT



**LONDON'S EXPERT COMMERCIAL
PROPERTY ADVISORS SOUTH OF THE RIVER**

UNIONSTREETPARTNERS.CO.UK



UNION STREET PARTNERS

10 STONEY STREET
LONDON SE1 9AD

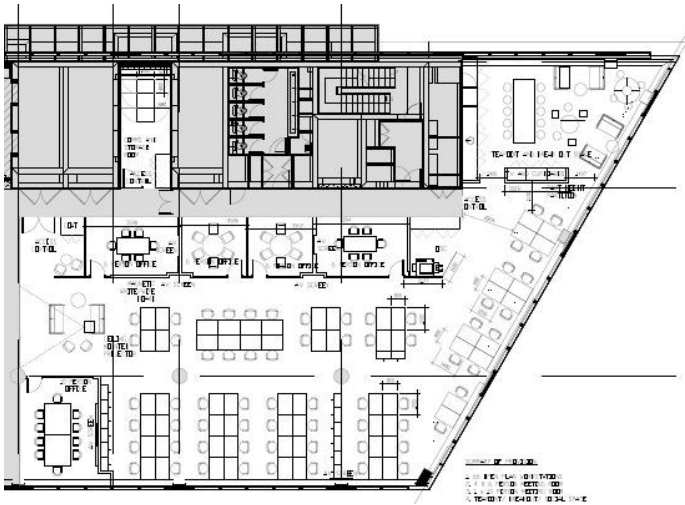
T 020 3757 7777

PT 11TH FLOOR, 240 BLACKFRIARS ROAD, SE1, LONDON SE1 8BU



FULLY FITTED SPACE WITH WONDERFUL LONDON VIEWS.

5,405 SQ FT | £65.00 PER SQ FT



DESCRIPTION

Pt 11th floor is fully fitted with 55 open plan work stations with 5 meeting rooms and also a selection of phone booths. Also a large break out area with wonderful views.

The building is wonderfully located on the corner of Southwark Street and Blackfriars Road. with plenty of amenity space including cafe on the 19th floor, Gym and bike and shower facilities.

AVAILABILITY

FLOOR	SIZE (SQ FT)	RENT (PSF)	AVAILABILITY
Part 11th Floor	5,405	£65.00	Available
TOTAL	5,405		

AMENITIES

- Fully Fitted (55 desks)
- 5 meeting rooms
- Kitchen/breakout area
- Grade A Space
- Wonderful Views
- Raised Floor
- AC
- Plug and Play

TERMS

RENT	RATES	S/C
£65.00 per sq ft	£24.36 per sq ft	£11.80 per sq ft

INFORMATION

A new Sub Lease or Assignment to December 2024

LINKS

[Website](#)

GET IN TOUCH

CHARLIE THOMPSON	BEN FISHER	FIONA CROWLEY
Union Street Partners 020 7855 3554 ct@unionstreetpartners.co.uk	Union Street Partners 020 7855 3584 bf@unionstreetpartners.co.uk	Union Street Partners 020 7855 3506 fc@unionstreetpartners.co.uk

SUBJECT TO CONTRACT. UNION STREET PARTNERS FOR THEMSELVES AND THE VENDOR OF THIS PROPERTY GIVE NOTICE THAT THESE PARTICULARS DO NOT FORM, OR FORM PART OF, ANY OFFER OR CONTRACT. THEY ARE INTENDED TO GIVE FAIR DESCRIPTION OF THE PROPERTY AND WHILST EVERY EFFORT HAS BEEN MADE TO ENSURE THEIR ACCURACY THIS CANNOT BE GUARANTEED. ANY INTENDING PURCHASER MUST THEREFORE SATISFY THEMSELVES BY INSPECTION OR OTHERWISE. NEITHER UNION STREET PARTNERS, NOR ANY OF ITS EMPLOYEES, HAS ANY AUTHORITY TO MAKE OR GIVE ANY FURTHER REPRESENTATIONS OR WARRANTY WHATSOEVER IN RELATION TO THIS PROPERTY. ALL PRICES AND RENTS QUOTED ARE NET OF VAT